

Angus Heifers='Baldie' calves

These sharp looking black heifers were pasture exposed to LHF Odyssey 802.

0933

Yearling Wt: 908



0940

Yearling Wt: 772



0942

Yearling Wt: 708



0949

Yearling Wt: 702



0951

Yearling Wt: 790



0959

Yearling Wt: 645



Service Sires



LH DSIGNR 813U



LHF Odyssey 802

Baldie Bred Heifers

Hereford/Angus heifers - Bred to LH DSIGNR 813U:



826R

Yearling: 623

901W

Yearling: 900



Marbling Herefords



Bred Heifers

lhfarms1@netel.net

Web Site

www.breedingcattlepage.com

IN THE HEREFORD SECTION

Or use:

<http://www.breedingcattlepage.com/hereford/>

ReynoldsLenthHerefords/homepage.htm

Lenth Herefords

Doug & Marilyn Lenth

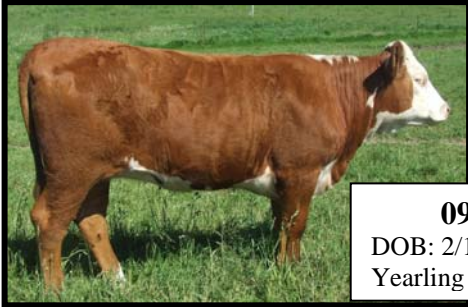
13690 130th St

Postville, IA 52162

Home: (563) 864-7703

Doug Cell: (563)380-5656

Commercial Heifers



0905

DOB: 2/1/2009
Yearling Wt: 769



0934

DOB: 3/1/2009
Yearling Wt: 589



0945

DOB: 3/10/2009
Yearling Wt: 655



9122

DOB: 2/25/2009
Yearling Wt: 732

Registered Heifers



LH MS DSIGNR 905W (42988967)

DOB: 3/1/2009 Birth: 70 Yearling: 769



LH MS DSIGNR 908W (U42988950)

DOB: 3/13/2009 Birth: 75 Yearling: 772



LH MS DSIGNR 915W (42988969)

DOB: 3/17/2009 Birth: 75 Yearling: 712



LH MS DSIGNR 927W (42988986)

DOB: 3/24/2009 Birth: 85 Yearling: 701

Registered Heifers



LH MS DSIGNR 928W (U42988950)

DOB: 3/25/2009 Birth: 70 Yearling: 717



LH MS DSIGNR 929W (42988955)

DOB: 3/24/2009 Birth: 75 Yearling: 672



LH MS DSIGNR 941W (U42988959)

DOB: 4/5/2009 Birth: 75 Yearling: 713



LH MS DSIGNR 946W (P42988971)

DOB: 4/22/2009 Birth: 80 Yearling: 800